

The Emerald Project

The Emerald Project is a community housing project that will demonstrate advances in ecological and healthy living in the major urban regeneration project in Ballymun Dublin. The project was conceived by The Emerald Housing Co-operative with partners Cluid Housing Association. Solearth are using the best and most appropriate techniques in consultative planning to create an integrated project featuring solar site design, passive ecological design measures and many green technologies to create a community that will be carbon neutral in terms of heating, DHW and lighting as result of the following innovations. Improved Fabric with U value of 0.12 K·m²/W, biomass boilers, Passive Stack HRV, Solar Thermal panels, A 320 m² Photovoltaic array, Low Energy Lighting , Cool Larders, Greywater recycling that will cleanse most of its water and 1500 m² of Green Roofs. As well as growing some of its own food. Ballymun Regeneration LTD and Sustainable Energy Ireland are patrons and supporters of the project. The project was awarded at the 2005 SEI sustainability awards.

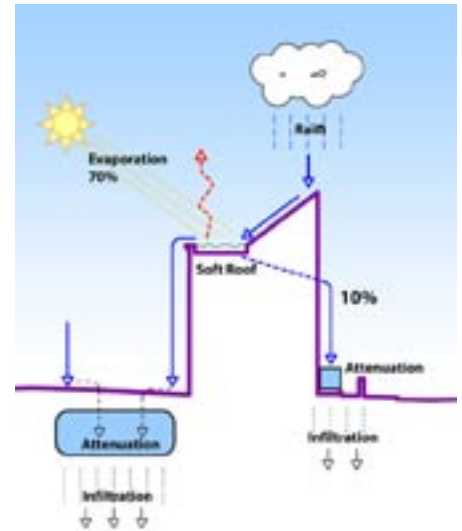
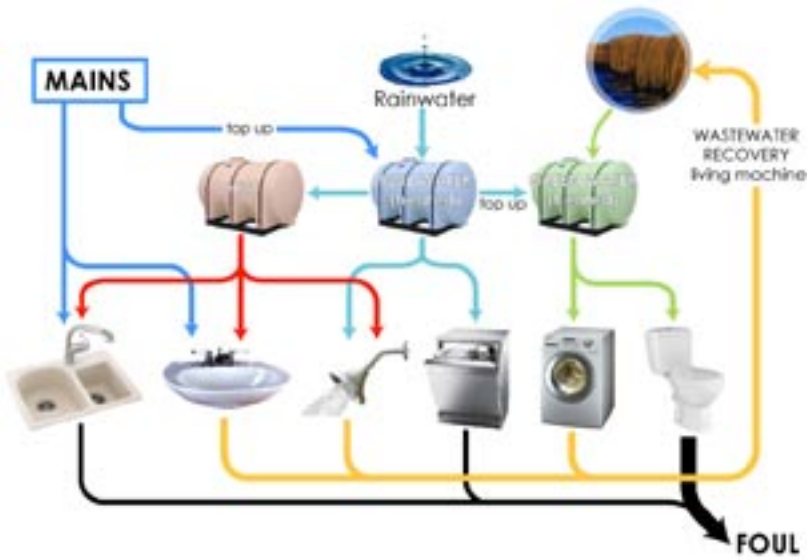
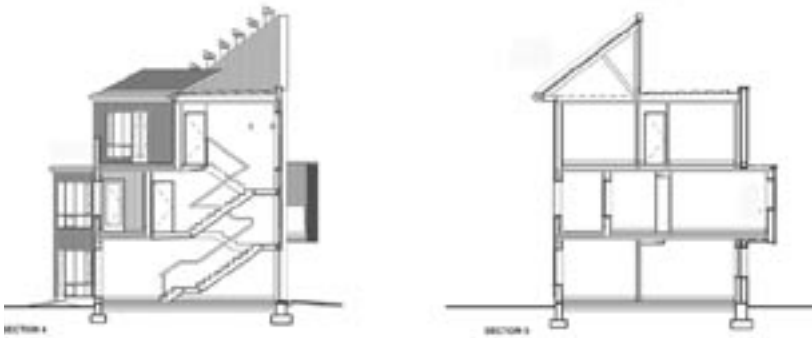


Client	Cluid Housing Assoc. Emerald Housing co-op
Appointment	Mid 2002
Contract Value	7.3 million euro
Commencement	2009
Services	Full Architectural Services
Location	Ballymun, Dublin



The Emerald Project

solearth ecological architecture



The Emerald Project

solearth ecological architecture

