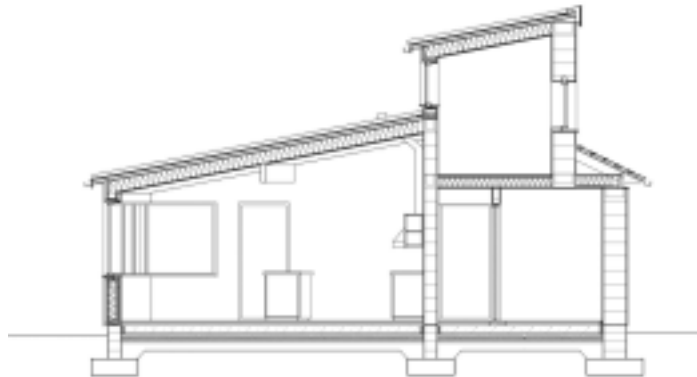


Tobin House

Single Family House
Co. Cork, Ireland

Client Private Client
Appointment Summer 2002
Contract Value 250,000 euro
Commencement October 2003
Completion October 2005
Services Full Architectural Services



A single family house in County Cork which presents a heavy masonry wall to the north and a light cedar clad timber frame structure to the south, maximising views out and solar access in. The brief looked to establish a semi-autonomous house collecting water and growing much of their own food, dealing with its own waste and providing energy from a ground source heat pump and solar panels. The timber frame and cladding from GreenTek utilises native non-treated timber and is insulated with Irish sheep's wool; internal finishes will be breathable natural paints and oils.

